

RoHS TEST REPORT

Report No. : B-R2410C4444

Date: 2024-11-05

Page 1 of 28

Applicant : Shanghai Xiyun Ozonetek Co., Ltd.

Address : Building 5, No. 5, Lane 208, Rongle East Road, Songjiang District,
Shanghai, China

Client ID : CC1089

Manufacturer : Same As Holder



Report Query



Report on the submitted sample said to be

Sample Name : Electrolytic Ozone Water Generator

Model No. : AQUA-WB-B

Sample model : AQUA-WB-B

Sample Received Date : 2024-10-25

Complete Date : 2024-11-05

Test Requested : As specified by client, to determine the Cadmium, Lead, Mercury, Hexavalent Chromium, PBBs / PBDEs, Bis-(2-ethylhexyl) Phthalate (DEHP), Diisobutyl phthalate(DIBP), Dibutyl Phthalate (DBP) & Benzylbutyl Phthalate (BBP) content in the submitted sample.

Test Result(s) : Conform to RoHS Directive 2011/65/EU Annex II amending Annex (EU)2015/863 and amending Annex (EU)2017/2102.

*****FOR FURTHER DETAILS, PLEASE REFER TO THE FOLLOWING PAGE(S)*****

Written by: _____

Shen Xiao

(Shen xiao)

Inspected by: _____

Austin Zhong

(Austin Zhong)

Approved by: _____

Martin Wang

*(Martin Wang)



This report is considered invalidated without the Special Seal for Inspection of the Beide (Shenzhen) Product Service Limited, This report shall not be altered, increased or deleted. The results shown in this test report refer only to the sample(s) tested. Without written approval of Beide (Shenzhen) Product Service Limited, this test report shall not be copied except in full and published as advertisement.

RoHS TEST REPORT

Report No. : B-R2410C4444

Date: 2024-11-05

Page 2 of 28

Test Method: With reference to IEC 62321-3-1:2013, IEC 62321-4:2013+A1:2017, IEC 62321-5:2013, IEC 62321-6:2015, IEC 62321-7-1:2015, IEC 62321-7-2:2017, IEC 62321-8:2017, EN IEC 63000:2018

- (1) Determination of Cadmium by ICP-OES.
- (2) Determination of Lead by ICP-OES.
- (3) Determination of Mercury by ICP-OES.
- (4) Determination of Hexavalent Chromium by Colorimetric Method using UV-Vis.
- (5) Determination of PBBs / PBDEs content by GC-MS.
- (6) Determination of phthalates by GC-MS.

Test Result(s):

Test item	Unit	Limit	Result			
			Metal frame (1)	White Plastic (2)	Metal (3)	White Plastic (4)
Cadmium (Cd).	mg/kg	100	N.D.	N.D.	N.D.	N.D.
Lead (Pb).	mg/kg	1000	N.D.	N.D.	N.D.	N.D.
Mercury (Hg).	mg/kg	1000	N.D.	N.D.	N.D.	N.D.
Hexavalent Chromium (Cr VI).	mg/kg	1000	N.D.	N.D.	N.D.	N.D.
Polybrominated Biphenyls (PBBs)	mg/kg	1000	N.D.	N.D.	N.D.	N.D.
Monobromobiphenyl	mg/kg	/	N.D.	N.D.	N.D.	N.D.
Dibromobiphenyl	mg/kg	/	N.D.	N.D.	N.D.	N.D.
Tribromobiphenyl	mg/kg	/	N.D.	N.D.	N.D.	N.D.
Tetrabromobiphenyl	mg/kg	/	N.D.	N.D.	N.D.	N.D.
Pentabromobiphenyl	mg/kg	/	N.D.	N.D.	N.D.	N.D.
Hexabromobiphenyl	mg/kg	/	N.D.	N.D.	N.D.	N.D.
Heptabromobiphenyl	mg/kg	/	N.D.	N.D.	N.D.	N.D.
Octabromobiphenyl	mg/kg	/	N.D.	N.D.	N.D.	N.D.

This report is considered invalidated without the Special Seal for Inspection of the Beide (Shenzhen) Product Service Limited, This report shall not be altered, increased or deleted. The results shown in this test report refer only to the sample(s) tested. Without written approval of Beide (Shenzhen) Product Service Limited, this test report shall not be copied except in full and published as advertisement.

RoHS TEST REPORT

Report No. : B-R2410C4444

Date: 2024-11-05

Page 3 of 28

Test item	Unit	Limit	Result			
			Metal frame (1)	White Plastic (2)	Metal (3)	White Plastic (4)
Nonabromobiphenyl	mg/kg	/	N.D.	N.D.	N.D.	N.D.
Decabromobiphenyl	mg/kg	/	N.D.	N.D.	N.D.	N.D.
Polybrominated Diphenyl Ethers (PBDEs)	mg/kg	1000	N.D.	N.D.	N.D.	N.D.
Monobromodiphenyl Ether	mg/kg	/	N.D.	N.D.	N.D.	N.D.
Dibromodiphenyl Ether	mg/kg	/	N.D.	N.D.	N.D.	N.D.
Tribromodiphenyl Ether	mg/kg	/	N.D.	N.D.	N.D.	N.D.
Tetrabromodiphenyl Ether	mg/kg	/	N.D.	N.D.	N.D.	N.D.
Pentabromodiphenyl Ether	mg/kg	/	N.D.	N.D.	N.D.	N.D.
Hexabromodiphenyl Ether	mg/kg	/	N.D.	N.D.	N.D.	N.D.
Heptabromodiphenyl Ether	mg/kg	/	N.D.	N.D.	N.D.	N.D.
Octabromodiphenyl Ether	mg/kg	/	N.D.	N.D.	N.D.	N.D.
Nonabromodiphenyl Ether	mg/kg	/	N.D.	N.D.	N.D.	N.D.
Decabromodiphenyl Ether	mg/kg	/	N.D.	N.D.	N.D.	N.D.
Diisobutyl phthalate(DIBP)	mg/kg	1000	N/A	N.D	N/A	N.D
Dibutyl Phthalate (DBP)	mg/kg	1000	N/A	N.D	N/A	N.D
Benzylbutyl Phthalate (BBP)	mg/kg	1000	N/A	N.D	N/A	N.D
Bis-(2-ethylhexyl) Phthalate (DEHP)	mg/kg	1000	N/A	N.D	N/A	N.D

This report is considered invalidated without the Special Seal for Inspection of the Beide (Shenzhen) Product Service Limited, This report shall not be altered, increased or deleted. The results shown in this test report refer only to the sample(s) tested. Without written approval of Beide (Shenzhen) Product Service Limited, this test report shall not be copied except in full and published as advertisement.

RoHS TEST REPORT

Report No. : B-R2410C4444

Date: 2024-11-05

Page 4 of 28

Test item	Unit	Limit	Result			
			White sleeve (5)	Black Plastic (6)	White Plastic (7)	Transparent rubber (8)
Cadmium (Cd).	mg/kg	100	N.D.	N.D.	N.D.	N.D.
Lead (Pb).	mg/kg	1000	N.D.	N.D.	N.D.	N.D.
Mercury (Hg).	mg/kg	1000	N.D.	N.D.	N.D.	N.D.
Hexavalent Chromium (Cr VI).	mg/kg	1000	N.D.	N.D.	N.D.	N.D.
Polybrominated Biphenyls (PBBs)	mg/kg	1000	N.D.	N.D.	N.D.	N.D.
Monobromobiphenyl	mg/kg	/	N.D.	N.D.	N.D.	N.D.
Dibromobiphenyl	mg/kg	/	N.D.	N.D.	N.D.	N.D.
Tribromobiphenyl	mg/kg	/	N.D.	N.D.	N.D.	N.D.
Tetrabromobiphenyl	mg/kg	/	N.D.	N.D.	N.D.	N.D.
Pentabromobiphenyl	mg/kg	/	N.D.	N.D.	N.D.	N.D.
Hexabromobiphenyl	mg/kg	/	N.D.	N.D.	N.D.	N.D.
Heptabromobiphenyl	mg/kg	/	N.D.	N.D.	N.D.	N.D.
Octabromobiphenyl	mg/kg	/	N.D.	N.D.	N.D.	N.D.
Nonabromobiphenyl	mg/kg	/	N.D.	N.D.	N.D.	N.D.
Decabromobiphenyl	mg/kg	/	N.D.	N.D.	N.D.	N.D.
Polybrominated Diphenyl Ethers (PBDEs)	mg/kg	1000	N.D.	N.D.	N.D.	N.D.
Monobromodiphenyl Ether	mg/kg	/	N.D.	N.D.	N.D.	N.D.

This report is considered invalidated without the Special Seal for Inspection of the Beide (Shenzhen) Product Service Limited, This report shall not be altered, increased or deleted. The results shown in this test report refer only to the sample(s) tested. Without written approval of Beide (Shenzhen) Product Service Limited, this test report shall not be copied except in full and published as advertisement.

RoHS TEST REPORT

Report No. : B-R2410C4444

Date: 2024-11-05

Page 5 of 28

Test item	Unit	Limit	Result			
			White sleeve (5)	Black Plastic (6)	White Plastic (7)	Transparent rubber (8)
Dibromodiphenyl Ether	mg/kg	/	N.D.	N.D.	N.D.	N.D.
Tribromodiphenyl Ether	mg/kg	/	N.D.	N.D.	N.D.	N.D.
Tetrabromodiphenyl Ether	mg/kg	/	N.D.	N.D.	N.D.	N.D.
Pentabromodiphenyl Ether	mg/kg	/	N.D.	N.D.	N.D.	N.D.
Hexabromodiphenyl Ether	mg/kg	/	N.D.	N.D.	N.D.	N.D.
Heptabromodiphenyl Ether	mg/kg	/	N.D.	N.D.	N.D.	N.D.
Octabromodiphenyl Ether	mg/kg	/	N.D.	N.D.	N.D.	N.D.
Nonabromodiphenyl Ether	mg/kg	/	N.D.	N.D.	N.D.	N.D.
Decabromodiphenyl Ether	mg/kg	/	N.D.	N.D.	N.D.	N.D.
Diisobutyl phthalate(DIBP)	mg/kg	1000	N.D.	N.D.	N.D.	N.D.
Dibutyl Phthalate (DBP)	mg/kg	1000	N.D.	N.D.	N.D.	N.D.
Benzylbutyl Phthalate (BBP)	mg/kg	1000	N.D.	N.D.	N.D.	N.D.
Bis-(2-ethylhexyl) Phthalate (DEHP)	mg/kg	1000	N.D.	N.D.	N.D.	N.D.

This report is considered invalidated without the Special Seal for Inspection of the Beide (Shenzhen) Product Service Limited, This report shall not be altered, increased or deleted. The results shown in this test report refer only to the sample(s) tested. Without written approval of Beide (Shenzhen) Product Service Limited, this test report shall not be copied except in full and published as advertisement.

RoHS TEST REPORT

Report No. : B-R2410C4444

Date: 2024-11-05

Page 6 of 28

Test item	Unit	Limit	Result			
			Rubber (9)	Black rubber (10)	Metal (11)	Copper wire (12)
Cadmium (Cd).	mg/kg	100	N.D.	N.D.	N.D.	N.D.
Lead (Pb).	mg/kg	1000	N.D.	N.D.	N.D.	N.D.
Mercury (Hg).	mg/kg	1000	N.D.	N.D.	N.D.	N.D.
Hexavalent Chromium (Cr VI).	mg/kg	1000	N.D.	N.D.	15.6628	N.D.
Polybrominated Biphenyls (PBBs)	mg/kg	1000	N.D.	N.D.	N.D.	N.D.
Monobromobiphenyl	mg/kg	/	N.D.	N.D.	N.D.	N.D.
Dibromobiphenyl	mg/kg	/	N.D.	N.D.	N.D.	N.D.
Tribromobiphenyl	mg/kg	/	N.D.	N.D.	N.D.	N.D.
Tetrabromobiphenyl	mg/kg	/	N.D.	N.D.	N.D.	N.D.
Pentabromobiphenyl	mg/kg	/	N.D.	N.D.	N.D.	N.D.
Hexabromobiphenyl	mg/kg	/	N.D.	N.D.	N.D.	N.D.
Heptabromobiphenyl	mg/kg	/	N.D.	N.D.	N.D.	N.D.
Octabromobiphenyl	mg/kg	/	N.D.	N.D.	N.D.	N.D.
Nonabromobiphenyl	mg/kg	/	N.D.	N.D.	N.D.	N.D.
Decabromobiphenyl	mg/kg	/	N.D.	N.D.	N.D.	N.D.
Polybrominated Diphenyl Ethers (PBDEs)	mg/kg	1000	N.D.	N.D.	N.D.	N.D.
Monobromodiphenyl Ether	mg/kg	/	N.D.	N.D.	N.D.	N.D.

This report is considered invalidated without the Special Seal for Inspection of the Beide (Shenzhen) Product Service Limited, This report shall not be altered, increased or deleted. The results shown in this test report refer only to the sample(s) tested. Without written approval of Beide (Shenzhen) Product Service Limited, this test report shall not be copied except in full and published as advertisement.

RoHS TEST REPORT

Report No. : B-R2410C4444

Date: 2024-11-05

Page 7 of 28

Test item	Unit	Limit	Result			
			Rubber (9)	Black rubber (10)	Metal (11)	Copper wire (12)
Dibromodiphenyl Ether	mg/kg	/	N.D.	N.D.	N.D.	N.D.
Tribromodiphenyl Ether	mg/kg	/	N.D.	N.D.	N.D.	N.D.
Tetrabromodiphenyl Ether	mg/kg	/	N.D.	N.D.	N.D.	N.D.
Pentabromodiphenyl Ether	mg/kg	/	N.D.	N.D.	N.D.	N.D.
Hexabromodiphenyl Ether	mg/kg	/	N.D.	N.D.	N.D.	N.D.
Heptabromodiphenyl Ether	mg/kg	/	N.D.	N.D.	N.D.	N.D.
Octabromodiphenyl Ether	mg/kg	/	N.D.	N.D.	N.D.	N.D.
Nonabromodiphenyl Ether	mg/kg	/	N.D.	N.D.	N.D.	N.D.
Decabromodiphenyl Ether	mg/kg	/	N.D.	N.D.	N.D.	N.D.
Diisobutyl phthalate(DIBP)	mg/kg	1000	N.D.	N.D.	N/A	N/A
Dibutyl Phthalate (DBP)	mg/kg	1000	N.D.	N.D.	N/A	N/A
Benzylbutyl Phthalate (BBP)	mg/kg	1000	N.D.	N.D.	N/A	N/A
Bis-(2-ethylhexyl) Phthalate (DEHP)	mg/kg	1000	N.D.	N.D.	N/A	N/A

This report is considered invalidated without the Special Seal for Inspection of the Beide (Shenzhen) Product Service Limited, This report shall not be altered, increased or deleted. The results shown in this test report refer only to the sample(s) tested. Without written approval of Beide (Shenzhen) Product Service Limited, this test report shall not be copied except in full and published as advertisement.

RoHS TEST REPORT

Report No. : B-R2410C4444

Date: 2024-11-05

Page 8 of 28

Test item	Unit	Limit	Result			
			Metal (13)	Metal (14)	Transparent plastic (15)	Black rubber (16)
Cadmium (Cd).	mg/kg	100	53.0578	N.D.	N.D.	N.D.
Lead (Pb).	mg/kg	1000	N.D.	N.D.	N.D.	N.D.
Mercury (Hg).	mg/kg	1000	N.D.	N.D.	N.D.	N.D.
Hexavalent Chromium (Cr VI).	mg/kg	1000	N.D.	N.D.	N.D.	N.D.
Polybrominated Biphenyls (PBBs)	mg/kg	1000	N.D.	N.D.	N.D.	N.D.
Monobromobiphenyl	mg/kg	/	N.D.	N.D.	N.D.	N.D.
Dibromobiphenyl	mg/kg	/	N.D.	N.D.	N.D.	N.D.
Tribromobiphenyl	mg/kg	/	N.D.	N.D.	N.D.	N.D.
Tetrabromobiphenyl	mg/kg	/	N.D.	N.D.	N.D.	N.D.
Pentabromobiphenyl	mg/kg	/	N.D.	N.D.	N.D.	N.D.
Hexabromobiphenyl	mg/kg	/	N.D.	N.D.	N.D.	N.D.
Heptabromobiphenyl	mg/kg	/	N.D.	N.D.	N.D.	N.D.
Octabromobiphenyl	mg/kg	/	N.D.	N.D.	N.D.	N.D.
Nonabromobiphenyl	mg/kg	/	N.D.	N.D.	N.D.	N.D.
Decabromobiphenyl	mg/kg	/	N.D.	N.D.	N.D.	N.D.
Polybrominated Diphenyl Ethers (PBDEs)	mg/kg	1000	N.D.	N.D.	N.D.	N.D.
Monobromodiphenyl Ether	mg/kg	/	N.D.	N.D.	N.D.	N.D.

This report is considered invalidated without the Special Seal for Inspection of the Beide (Shenzhen) Product Service Limited, This report shall not be altered, increased or deleted. The results shown in this test report refer only to the sample(s) tested. Without written approval of Beide (Shenzhen) Product Service Limited, this test report shall not be copied except in full and published as advertisement.

RoHS TEST REPORT

Report No. : B-R2410C4444

Date: 2024-11-05

Page 9 of 28

Test item	Unit	Limit	Result			
			Metal (13)	Metal (14)	Transparent plastic (15)	Black rubber (16)
Dibromodiphenyl Ether	mg/kg	/	N.D.	N.D.	N.D.	N.D.
Tribromodiphenyl Ether	mg/kg	/	N.D.	N.D.	N.D.	N.D.
Tetrabromodiphenyl Ether	mg/kg	/	N.D.	N.D.	N.D.	N.D.
Pentabromodiphenyl Ether	mg/kg	/	N.D.	N.D.	N.D.	N.D.
Hexabromodiphenyl Ether	mg/kg	/	N.D.	N.D.	N.D.	N.D.
Heptabromodiphenyl Ether	mg/kg	/	N.D.	N.D.	N.D.	N.D.
Octabromodiphenyl Ether	mg/kg	/	N.D.	N.D.	N.D.	N.D.
Nonabromodiphenyl Ether	mg/kg	/	N.D.	N.D.	N.D.	N.D.
Decabromodiphenyl Ether	mg/kg	/	N.D.	N.D.	N.D.	N.D.
Diisobutyl phthalate(DIBP)	mg/kg	1000	N/A	N/A	N.D.	N.D.
Dibutyl Phthalate (DBP)	mg/kg	1000	N/A	N/A	N.D.	N.D.
Benzylbutyl Phthalate (BBP)	mg/kg	1000	N/A	N/A	N.D.	N.D.
Bis-(2-ethylhexyl) Phthalate (DEHP)	mg/kg	1000	N/A	N/A	N.D.	N.D.

This report is considered invalidated without the Special Seal for Inspection of the Beide (Shenzhen) Product Service Limited, This report shall not be altered, increased or deleted. The results shown in this test report refer only to the sample(s) tested. Without written approval of Beide (Shenzhen) Product Service Limited, this test report shall not be copied except in full and published as advertisement.

RoHS TEST REPORT

Report No. : B-R2410C4444

Date: 2024-11-05

Page 10 of 28

Test item	Unit	Limit	Result			
			Black Plastic (17)	Transparent plastic (18)	Contact plate (19)	Yellow plastic (20)
Cadmium (Cd).	mg/kg	100	N.D.	N.D.	N.D.	N.D.
Lead (Pb).	mg/kg	1000	N.D.	N.D.	N.D.	N.D.
Mercury (Hg).	mg/kg	1000	2.1189	N.D.	N.D.	N.D.
Hexavalent Chromium (Cr VI).	mg/kg	1000	N.D.	N.D.	N.D.	N.D.
Polybrominated Biphenyls (PBBs)	mg/kg	1000	N.D.	N.D.	N.D.	N.D.
Monobromobiphenyl	mg/kg	/	N.D.	N.D.	N.D.	N.D.
Dibromobiphenyl	mg/kg	/	N.D.	N.D.	N.D.	N.D.
Tribromobiphenyl	mg/kg	/	N.D.	N.D.	N.D.	N.D.
Tetrabromobiphenyl	mg/kg	/	N.D.	N.D.	N.D.	N.D.
Pentabromobiphenyl	mg/kg	/	N.D.	N.D.	N.D.	N.D.
Hexabromobiphenyl	mg/kg	/	N.D.	N.D.	N.D.	N.D.
Heptabromobiphenyl	mg/kg	/	N.D.	N.D.	N.D.	N.D.
Octabromobiphenyl	mg/kg	/	N.D.	N.D.	N.D.	N.D.
Nonabromobiphenyl	mg/kg	/	N.D.	N.D.	N.D.	N.D.
Decabromobiphenyl	mg/kg	/	N.D.	N.D.	N.D.	N.D.
Polybrominated Diphenyl Ethers (PBDEs)	mg/kg	1000	N.D.	N.D.	N.D.	N.D.
Monobromodiphenyl Ether	mg/kg	/	N.D.	N.D.	N.D.	N.D.

This report is considered invalidated without the Special Seal for Inspection of the Beide (Shenzhen) Product Service Limited, This report shall not be altered, increased or deleted. The results shown in this test report refer only to the sample(s) tested. Without written approval of Beide (Shenzhen) Product Service Limited, this test report shall not be copied except in full and published as advertisement.

RoHS TEST REPORT

Report No. : B-R2410C4444

Date: 2024-11-05

Page 11 of 28

Test item	Unit	Limit	Result			
			Black Plastic (17)	Transparent plastic (18)	Contact plate (19)	Yellow plastic (20)
Dibromodiphenyl Ether	mg/kg	/	N.D.	N.D.	N.D.	N.D.
Tribromodiphenyl Ether	mg/kg	/	N.D.	N.D.	N.D.	N.D.
Tetrabromodiphenyl Ether	mg/kg	/	N.D.	N.D.	N.D.	N.D.
Pentabromodiphenyl Ether	mg/kg	/	N.D.	N.D.	N.D.	N.D.
Hexabromodiphenyl Ether	mg/kg	/	N.D.	N.D.	N.D.	N.D.
Heptabromodiphenyl Ether	mg/kg	/	N.D.	N.D.	N.D.	N.D.
Octabromodiphenyl Ether	mg/kg	/	N.D.	N.D.	N.D.	N.D.
Nonabromodiphenyl Ether	mg/kg	/	N.D.	N.D.	N.D.	N.D.
Decabromodiphenyl Ether	mg/kg	/	N.D.	N.D.	N.D.	N.D.
Diisobutyl phthalate(DIBP)	mg/kg	1000	N.D.	N.D.	N/A	N.D.
Dibutyl Phthalate (DBP)	mg/kg	1000	N.D.	N.D.	N/A	N.D.
Benzylbutyl Phthalate (BBP)	mg/kg	1000	N.D.	N.D.	N/A	N.D.
Bis-(2-ethylhexyl) Phthalate (DEHP)	mg/kg	1000	N.D.	N.D.	N/A	N.D.

This report is considered invalidated without the Special Seal for Inspection of the Beide (Shenzhen) Product Service Limited, This report shall not be altered, increased or deleted. The results shown in this test report refer only to the sample(s) tested. Without written approval of Beide (Shenzhen) Product Service Limited, this test report shall not be copied except in full and published as advertisement.

RoHS TEST REPORT

Report No. : B-R2410C4444

Date: 2024-11-05

Page 12 of 28

Test item	Unit	Limit	Result			
			Black Plastic (21)	Wire cover (22)	Grey rubber (23)	White Plastic (24)
Cadmium (Cd).	mg/kg	100	N.D.	3.3724	N.D.	N.D.
Lead (Pb).	mg/kg	1000	N.D.	N.D.	N.D.	N.D.
Mercury (Hg).	mg/kg	1000	N.D.	N.D.	N.D.	N.D.
Hexavalent Chromium (Cr VI).	mg/kg	1000	N.D.	N.D.	N.D.	N.D.
Polybrominated Biphenyls (PBBs)	mg/kg	1000	N.D.	N.D.	N.D.	N.D.
Monobromobiphenyl	mg/kg	/	N.D.	N.D.	N.D.	N.D.
Dibromobiphenyl	mg/kg	/	N.D.	N.D.	N.D.	N.D.
Tribromobiphenyl	mg/kg	/	N.D.	N.D.	N.D.	N.D.
Tetrabromobiphenyl	mg/kg	/	N.D.	N.D.	N.D.	N.D.
Pentabromobiphenyl	mg/kg	/	N.D.	N.D.	N.D.	N.D.
Hexabromobiphenyl	mg/kg	/	N.D.	N.D.	N.D.	N.D.
Heptabromobiphenyl	mg/kg	/	N.D.	N.D.	N.D.	N.D.
Octabromobiphenyl	mg/kg	/	N.D.	N.D.	N.D.	N.D.
Nonabromobiphenyl	mg/kg	/	N.D.	N.D.	N.D.	N.D.
Decabromobiphenyl	mg/kg	/	N.D.	N.D.	N.D.	N.D.
Polybrominated Diphenyl Ethers (PBDEs)	mg/kg	1000	N.D.	N.D.	N.D.	N.D.
Monobromodiphenyl Ether	mg/kg	/	N.D.	N.D.	N.D.	N.D.

This report is considered invalidated without the Special Seal for Inspection of the Beide (Shenzhen) Product Service Limited, This report shall not be altered, increased or deleted. The results shown in this test report refer only to the sample(s) tested. Without written approval of Beide (Shenzhen) Product Service Limited, this test report shall not be copied except in full and published as advertisement.

RoHS TEST REPORT

Report No. : B-R2410C4444

Date: 2024-11-05

Page 13 of 28

Test item	Unit	Limit	Result			
			Black Plastic (21)	Wire cover (22)	Grey rubber (23)	White Plastic (24)
Dibromodiphenyl Ether	mg/kg	/	N.D.	N.D.	N.D.	N.D.
Tribromodiphenyl Ether	mg/kg	/	N.D.	N.D.	N.D.	N.D.
Tetrabromodiphenyl Ether	mg/kg	/	N.D.	N.D.	N.D.	N.D.
Pentabromodiphenyl Ether	mg/kg	/	N.D.	N.D.	N.D.	N.D.
Hexabromodiphenyl Ether	mg/kg	/	N.D.	N.D.	N.D.	N.D.
Heptabromodiphenyl Ether	mg/kg	/	N.D.	N.D.	N.D.	N.D.
Octabromodiphenyl Ether	mg/kg	/	N.D.	N.D.	N.D.	N.D.
Nonabromodiphenyl Ether	mg/kg	/	N.D.	N.D.	N.D.	N.D.
Decabromodiphenyl Ether	mg/kg	/	N.D.	N.D.	N.D.	N.D.
Diisobutyl phthalate(DIBP)	mg/kg	1000	N.D.	N.D.	N.D.	N.D.
Dibutyl Phthalate (DBP)	mg/kg	1000	N.D.	N.D.	N.D.	N.D.
Benzylbutyl Phthalate (BBP)	mg/kg	1000	N.D.	N.D.	N.D.	N.D.
Bis-(2-ethylhexyl) Phthalate (DEHP)	mg/kg	1000	N.D.	N.D.	N.D.	N.D.

This report is considered invalidated without the Special Seal for Inspection of the Beide (Shenzhen) Product Service Limited, This report shall not be altered, increased or deleted. The results shown in this test report refer only to the sample(s) tested. Without written approval of Beide (Shenzhen) Product Service Limited, this test report shall not be copied except in full and published as advertisement.

RoHS TEST REPORT

Report No. : B-R2410C4444

Date: 2024-11-05

Page 14 of 28

Test item	Unit	Limit	Result			
			Black Plastic (25)	White Plastic (26)	Wire cover (27)	White Plastic (28)
Cadmium (Cd).	mg/kg	100	N.D.	N.D.	3.2565	N.D.
Lead (Pb).	mg/kg	1000	N.D.	N.D.	N.D.	N.D.
Mercury (Hg).	mg/kg	1000	N.D.	N.D.	N.D.	N.D.
Hexavalent Chromium (Cr VI).	mg/kg	1000	N.D.	N.D.	N.D.	N.D.
Polybrominated Biphenyls (PBBs)	mg/kg	1000	N.D.	N.D.	N.D.	N.D.
Monobromobiphenyl	mg/kg	/	N.D.	N.D.	N.D.	N.D.
Dibromobiphenyl	mg/kg	/	N.D.	N.D.	N.D.	N.D.
Tribromobiphenyl	mg/kg	/	N.D.	N.D.	N.D.	N.D.
Tetrabromobiphenyl	mg/kg	/	N.D.	N.D.	N.D.	N.D.
Pentabromobiphenyl	mg/kg	/	N.D.	N.D.	N.D.	N.D.
Hexabromobiphenyl	mg/kg	/	N.D.	N.D.	N.D.	N.D.
Heptabromobiphenyl	mg/kg	/	N.D.	N.D.	N.D.	N.D.
Octabromobiphenyl	mg/kg	/	N.D.	N.D.	N.D.	N.D.
Nonabromobiphenyl	mg/kg	/	N.D.	N.D.	N.D.	N.D.
Decabromobiphenyl	mg/kg	/	N.D.	N.D.	N.D.	N.D.
Polybrominated Diphenyl Ethers (PBDEs)	mg/kg	1000	N.D.	N.D.	N.D.	N.D.
Monobromodiphenyl Ether	mg/kg	/	N.D.	N.D.	N.D.	N.D.

This report is considered invalidated without the Special Seal for Inspection of the Beide (Shenzhen) Product Service Limited, This report shall not be altered, increased or deleted. The results shown in this test report refer only to the sample(s) tested. Without written approval of Beide (Shenzhen) Product Service Limited, this test report shall not be copied except in full and published as advertisement.

RoHS TEST REPORT

Report No. : B-R2410C4444

Date: 2024-11-05

Page 15 of 28

Test item	Unit	Limit	Result			
			Black Plastic (25)	White Plastic (26)	Wire cover (27)	White Plastic (28)
Dibromodiphenyl Ether	mg/kg	/	N.D.	N.D.	N.D.	N.D.
Tribromodiphenyl Ether	mg/kg	/	N.D.	N.D.	N.D.	N.D.
Tetrabromodiphenyl Ether	mg/kg	/	N.D.	N.D.	N.D.	N.D.
Pentabromodiphenyl Ether	mg/kg	/	N.D.	N.D.	N.D.	N.D.
Hexabromodiphenyl Ether	mg/kg	/	N.D.	N.D.	N.D.	N.D.
Heptabromodiphenyl Ether	mg/kg	/	N.D.	N.D.	N.D.	N.D.
Octabromodiphenyl Ether	mg/kg	/	N.D.	N.D.	N.D.	N.D.
Nonabromodiphenyl Ether	mg/kg	/	N.D.	N.D.	N.D.	N.D.
Decabromodiphenyl Ether	mg/kg	/	N.D.	N.D.	N.D.	N.D.
Diisobutyl phthalate(DIBP)	mg/kg	1000	N.D.	N.D.	N.D.	N.D.
Dibutyl Phthalate (DBP)	mg/kg	1000	N.D.	N.D.	N.D.	N.D.
Benzylbutyl Phthalate (BBP)	mg/kg	1000	N.D.	N.D.	N.D.	N.D.
Bis-(2-ethylhexyl) Phthalate (DEHP)	mg/kg	1000	N.D.	N.D.	N.D.	N.D.

This report is considered invalidated without the Special Seal for Inspection of the Beide (Shenzhen) Product Service Limited, This report shall not be altered, increased or deleted. The results shown in this test report refer only to the sample(s) tested. Without written approval of Beide (Shenzhen) Product Service Limited, this test report shall not be copied except in full and published as advertisement.

RoHS TEST REPORT

Report No. : B-R2410C4444

Date: 2024-11-05

Page 16 of 28

Test item	Unit	Limit	Result			
			Translucent plastic (29)	Screw (30)	Circuit Board (31)	Solder (32)
Cadmium (Cd).	mg/kg	100	N.D.	N.D.	7.9617	N.D.
Lead (Pb).	mg/kg	1000	N.D.	N.D.	3.486	N.D.
Mercury (Hg).	mg/kg	1000	N.D.	N.D.	N.D.	N.D.
Hexavalent Chromium (Cr VI).	mg/kg	1000	N.D.	N.D.	N.D.	N.D.
Polybrominated Biphenyls (PBBs)	mg/kg	1000	N.D.	N.D.	N.D.	N.D.
Monobromobiphenyl	mg/kg	/	N.D.	N.D.	N.D.	N.D.
Dibromobiphenyl	mg/kg	/	N.D.	N.D.	N.D.	N.D.
Tribromobiphenyl	mg/kg	/	N.D.	N.D.	N.D.	N.D.
Tetrabromobiphenyl	mg/kg	/	N.D.	N.D.	N.D.	N.D.
Pentabromobiphenyl	mg/kg	/	N.D.	N.D.	N.D.	N.D.
Hexabromobiphenyl	mg/kg	/	N.D.	N.D.	N.D.	N.D.
Heptabromobiphenyl	mg/kg	/	N.D.	N.D.	N.D.	N.D.
Octabromobiphenyl	mg/kg	/	N.D.	N.D.	N.D.	N.D.
Nonabromobiphenyl	mg/kg	/	N.D.	N.D.	N.D.	N.D.
Decabromobiphenyl	mg/kg	/	N.D.	N.D.	N.D.	N.D.
Polybrominated Diphenyl Ethers (PBDEs)	mg/kg	1000	N.D.	N.D.	N.D.	N.D.
Monobromodiphenyl Ether	mg/kg	/	N.D.	N.D.	N.D.	N.D.

This report is considered invalidated without the Special Seal for Inspection of the Beide (Shenzhen) Product Service Limited, This report shall not be altered, increased or deleted. The results shown in this test report refer only to the sample(s) tested. Without written approval of Beide (Shenzhen) Product Service Limited, this test report shall not be copied except in full and published as advertisement.

RoHS TEST REPORT

Report No. : B-R2410C4444

Date: 2024-11-05

Page 17 of 28

Test item	Unit	Limit	Result			
			Translucent plastic (29)	Screw (30)	Circuit Board (31)	Solder (32)
Dibromodiphenyl Ether	mg/kg	/	N.D.	N.D.	N.D.	N.D.
Tribromodiphenyl Ether	mg/kg	/	N.D.	N.D.	N.D.	N.D.
Tetrabromodiphenyl Ether	mg/kg	/	N.D.	N.D.	N.D.	N.D.
Pentabromodiphenyl Ether	mg/kg	/	N.D.	N.D.	N.D.	N.D.
Hexabromodiphenyl Ether	mg/kg	/	N.D.	N.D.	N.D.	N.D.
Heptabromodiphenyl Ether	mg/kg	/	N.D.	N.D.	N.D.	N.D.
Octabromodiphenyl Ether	mg/kg	/	N.D.	N.D.	N.D.	N.D.
Nonabromodiphenyl Ether	mg/kg	/	N.D.	N.D.	N.D.	N.D.
Decabromodiphenyl Ether	mg/kg	/	N.D.	N.D.	N.D.	N.D.
Diisobutyl phthalate(DIBP)	mg/kg	1000	N.D.	N/A	N.D.	N/A
Dibutyl Phthalate (DBP)	mg/kg	1000	N.D.	N/A	N.D.	N/A
Benzylbutyl Phthalate (BBP)	mg/kg	1000	N.D.	N/A	N.D.	N/A
Bis-(2-ethylhexyl) Phthalate (DEHP)	mg/kg	1000	N.D.	N/A	N.D.	N/A

This report is considered invalidated without the Special Seal for Inspection of the Beide (Shenzhen) Product Service Limited, This report shall not be altered, increased or deleted. The results shown in this test report refer only to the sample(s) tested. Without written approval of Beide (Shenzhen) Product Service Limited, this test report shall not be copied except in full and published as advertisement.

RoHS TEST REPORT

Report No. : B-R2410C4444

Date: 2024-11-05

Page 18 of 28

Test item	Unit	Limit	Result			
			White plastic (33)	Display Board (34)	Screw (35)	Metal (36)
Cadmium (Cd).	mg/kg	100	N.D.	N.D.	N.D.	N.D.
Lead (Pb).	mg/kg	1000	N.D.	N.D.	N.D.	N.D.
Mercury (Hg).	mg/kg	1000	N.D.	N.D.	N.D.	N.D.
Hexavalent Chromium (Cr VI).	mg/kg	1000	N.D.	N.D.	N.D.	N.D.
Polybrominated Biphenyls (PBBs)	mg/kg	1000	N.D.	N.D.	N.D.	N.D.
Monobromobiphenyl	mg/kg	/	N.D.	N.D.	N.D.	N.D.
Dibromobiphenyl	mg/kg	/	N.D.	N.D.	N.D.	N.D.
Tribromobiphenyl	mg/kg	/	N.D.	N.D.	N.D.	N.D.
Tetrabromobiphenyl	mg/kg	/	N.D.	N.D.	N.D.	N.D.
Pentabromobiphenyl	mg/kg	/	N.D.	N.D.	N.D.	N.D.
Hexabromobiphenyl	mg/kg	/	N.D.	N.D.	N.D.	N.D.
Heptabromobiphenyl	mg/kg	/	N.D.	N.D.	N.D.	N.D.
Octabromobiphenyl	mg/kg	/	N.D.	N.D.	N.D.	N.D.
Nonabromobiphenyl	mg/kg	/	N.D.	N.D.	N.D.	N.D.
Decabromobiphenyl	mg/kg	/	N.D.	N.D.	N.D.	N.D.
Polybrominated Diphenyl Ethers (PBDEs)	mg/kg	1000	N.D.	N.D.	N.D.	N.D.
Monobromodiphenyl Ether	mg/kg	/	N.D.	N.D.	N.D.	N.D.

This report is considered invalidated without the Special Seal for Inspection of the Beide (Shenzhen) Product Service Limited, This report shall not be altered, increased or deleted. The results shown in this test report refer only to the sample(s) tested. Without written approval of Beide (Shenzhen) Product Service Limited, this test report shall not be copied except in full and published as advertisement.

RoHS TEST REPORT

Report No. : B-R2410C4444

Date: 2024-11-05

Page 19 of 28

Test item	Unit	Limit	Result			
			White plastic (33)	Display Board (34)	Screw (35)	Metal (36)
Dibromodiphenyl Ether	mg/kg	/	N.D.	N.D.	N.D.	N.D.
Tribromodiphenyl Ether	mg/kg	/	N.D.	N.D.	N.D.	N.D.
Tetrabromodiphenyl Ether	mg/kg	/	N.D.	N.D.	N.D.	N.D.
Pentabromodiphenyl Ether	mg/kg	/	N.D.	N.D.	N.D.	N.D.
Hexabromodiphenyl Ether	mg/kg	/	N.D.	N.D.	N.D.	N.D.
Heptabromodiphenyl Ether	mg/kg	/	N.D.	N.D.	N.D.	N.D.
Octabromodiphenyl Ether	mg/kg	/	N.D.	N.D.	N.D.	N.D.
Nonabromodiphenyl Ether	mg/kg	/	N.D.	N.D.	N.D.	N.D.
Decabromodiphenyl Ether	mg/kg	/	N.D.	N.D.	N.D.	N.D.
Diisobutyl phthalate(DIBP)	mg/kg	1000	N.D.	N.D.	N/A	N/A
Dibutyl Phthalate (DBP)	mg/kg	1000	N.D.	N.D.	N/A	N/A
Benzylbutyl Phthalate (BBP)	mg/kg	1000	N.D.	N.D.	N/A	N/A
Bis-(2-ethylhexyl) Phthalate (DEHP)	mg/kg	1000	N.D.	N.D.	N/A	N/A

Note:

1. mg/kg = milligram per kilogram = ppm
2. N.D. = Not Detected (<MDL)
3. N/A = Not Applicable
4. MDL = Method detection limit

This report is considered invalidated without the Special Seal for Inspection of the Beide (Shenzhen) Product Service Limited, This report shall not be altered, increased or deleted. The results shown in this test report refer only to the sample(s) tested. Without written approval of Beide (Shenzhen) Product Service Limited, this test report shall not be copied except in full and published as advertisement.

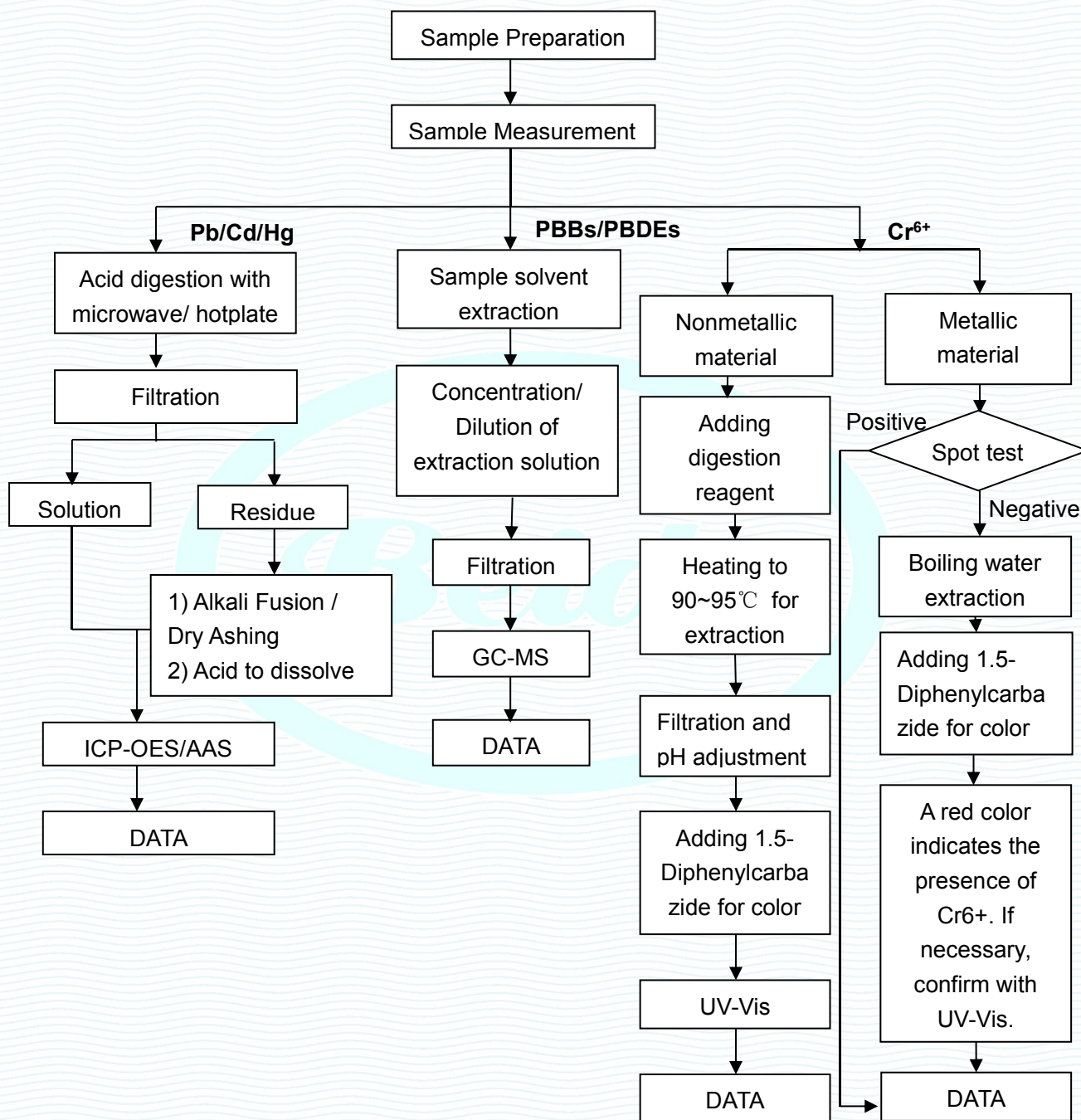
RoHS TEST REPORT

Report No. : B-R2410C4444

Date: 2024-11-05

Page 20 of 28

RoHS Testing Flow Chart



This report is considered invalidated without the Special Seal for Inspection of the Beide (Shenzhen) Product Service Limited, This report shall not be altered, increased or deleted. The results shown in this test report refer only to the sample(s) tested. Without written approval of Beide (Shenzhen) Product Service Limited, this test report shall not be copied except in full and published as advertisement.

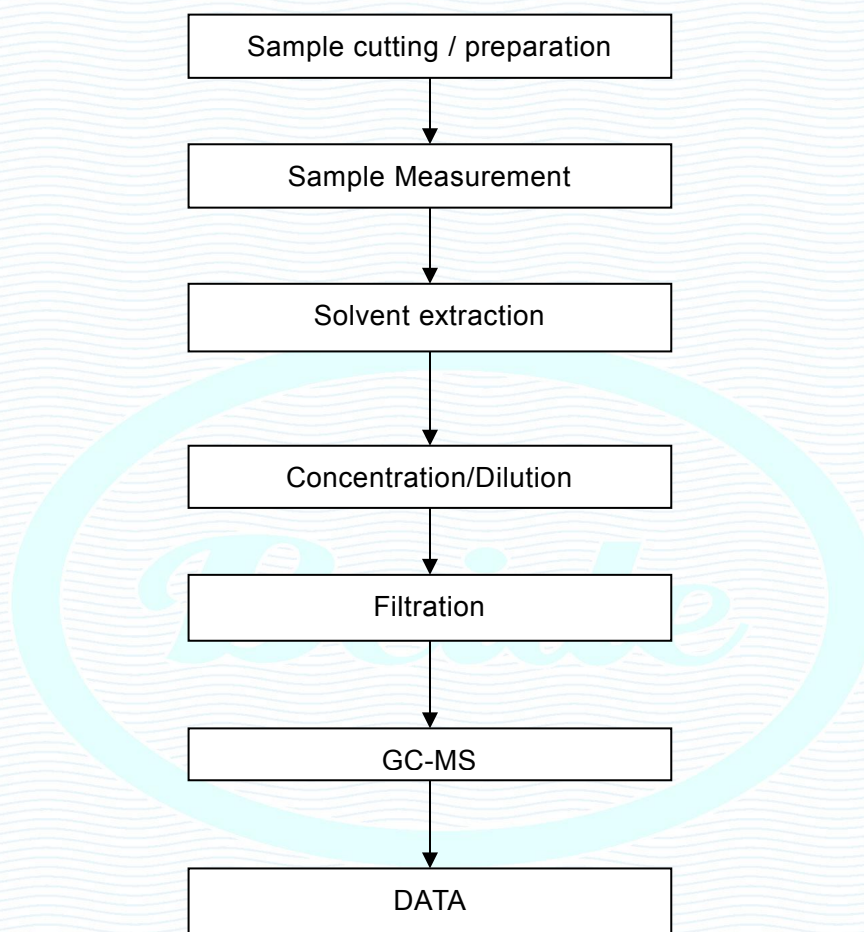
RoHS TEST REPORT

Report No. : B-R2410C4444

Date: 2024-11-05

Page 21 of 28

Phthalates Testing Flow Chart



This report is considered invalidated without the Special Seal for Inspection of the Beide (Shenzhen) Product Service Limited, This report shall not be altered, increased or deleted. The results shown in this test report refer only to the sample(s) tested. Without written approval of Beide (Shenzhen) Product Service Limited, this test report shall not be copied except in full and published as advertisement.

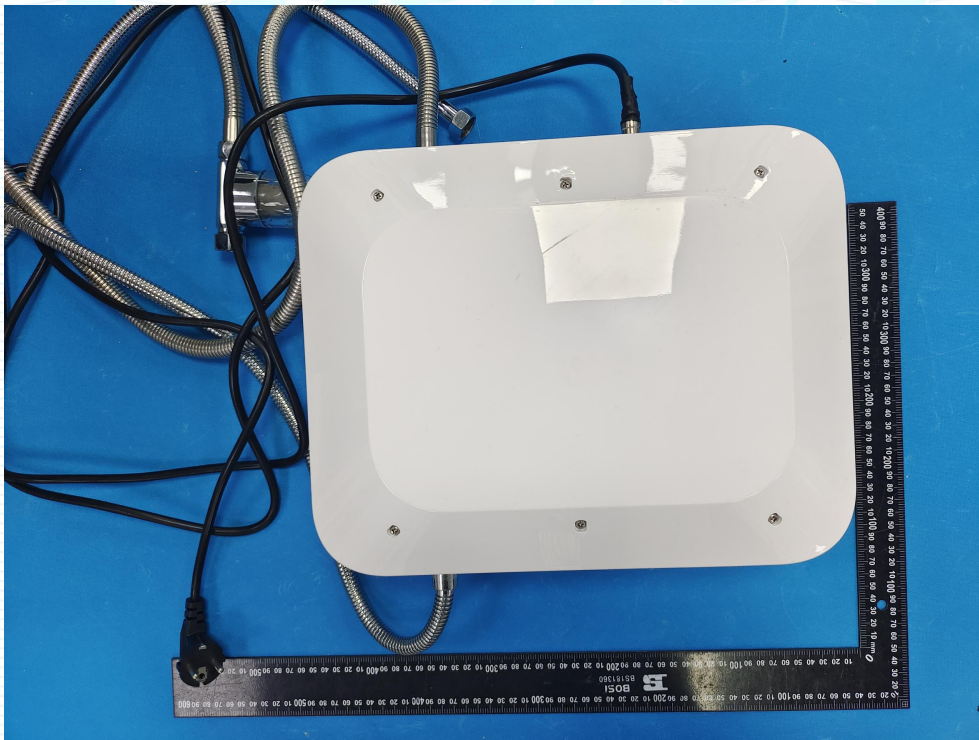
RoHS TEST REPORT

Report No. : B-R2410C4444

Date: 2024-11-05

Page 22 of 28

Photographs of Samples



This report is considered invalidated without the Special Seal for Inspection of the Beide (Shenzhen) Product Service Limited, This report shall not be altered, increased or deleted. The results shown in this test report refer only to the sample(s) tested. Without written approval of Beide (Shenzhen) Product Service Limited, this test report shall not be copied except in full and published as advertisement.

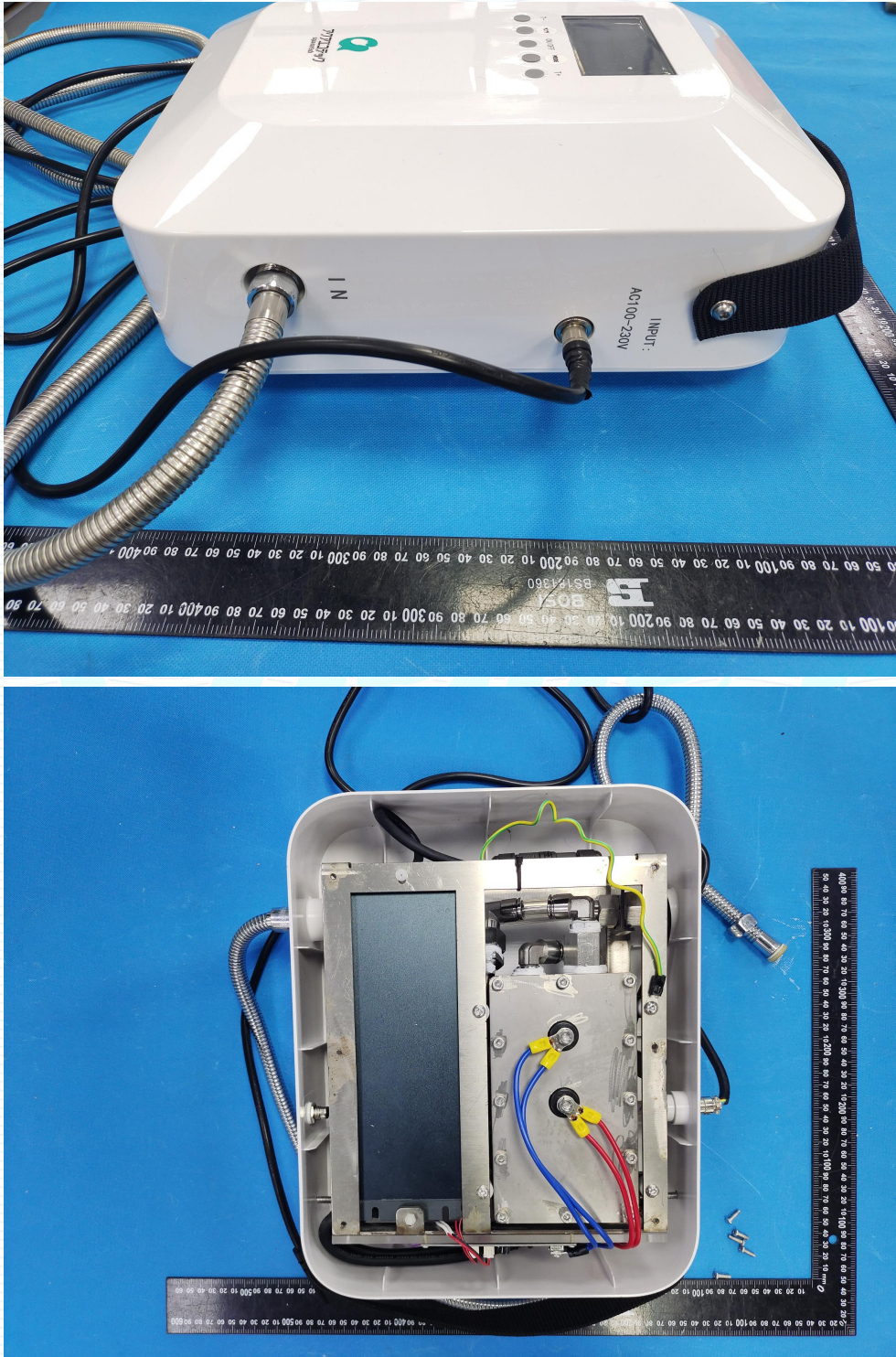
Beide (Shenzhen) Product Service Limited
Building5.No.5.Lane 208.Rongle East Road,Songjiang-District,Shanghai
Tel.: +86-755-27454498, Email: admin@szbeide.com

RoHS TEST REPORT

Report No. : B-R2410C4444

Date: 2024-11-05

Page 23 of 28



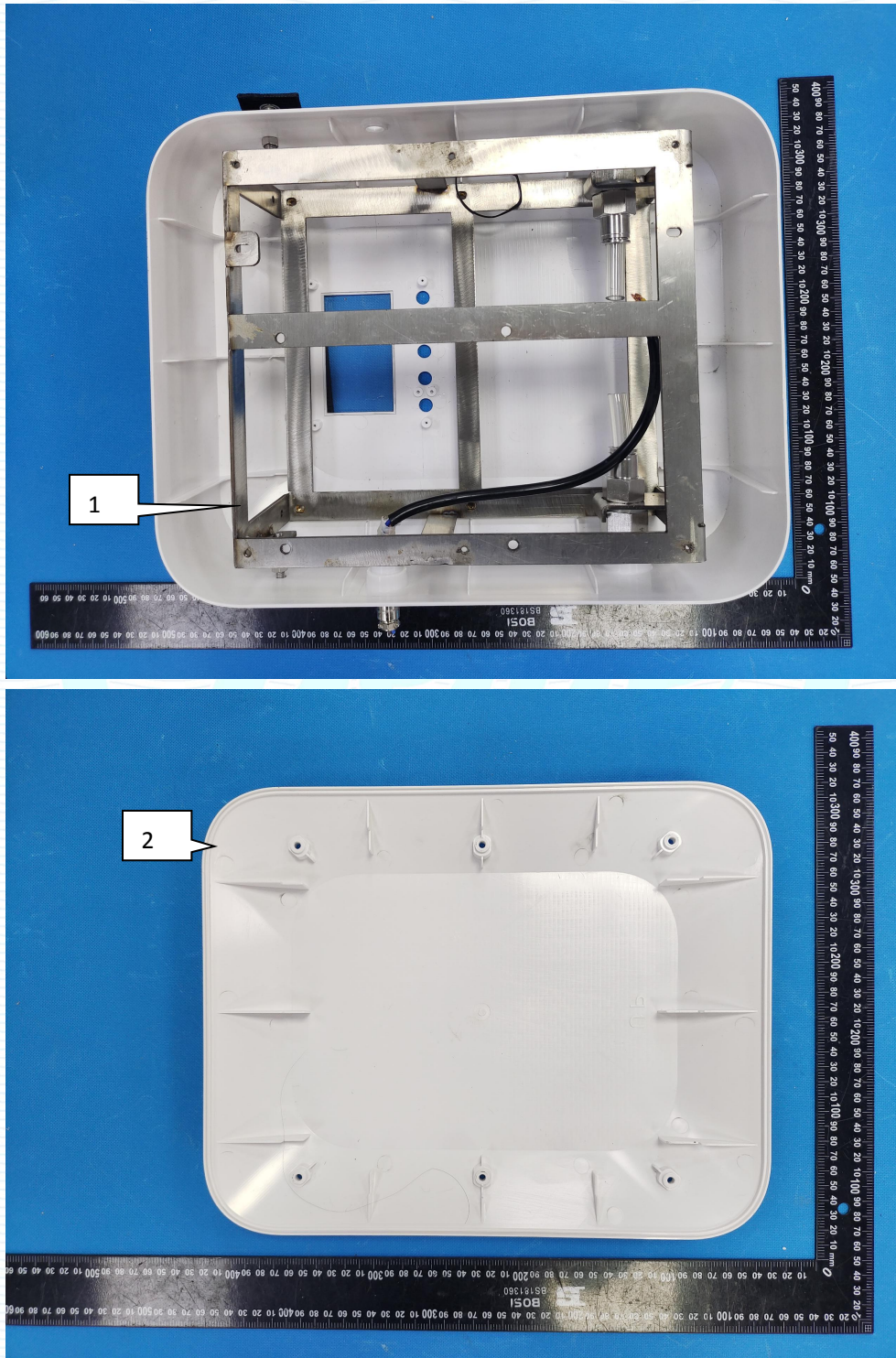
This report is considered invalidated without the Special Seal for Inspection of the Beide (Shenzhen) Product Service Limited, This report shall not be altered, increased or deleted. The results shown in this test report refer only to the sample(s) tested. Without written approval of Beide (Shenzhen) Product Service Limited, this test report shall not be copied except in full and published as advertisement.

RoHS TEST REPORT

Report No. : B-R2410C4444

Date: 2024-11-05

Page 24 of 28



This report is considered invalidated without the Special Seal for Inspection of the Beide (Shenzhen) Product Service Limited, This report shall not be altered, increased or deleted. The results shown in this test report refer only to the sample(s) tested. Without written approval of Beide (Shenzhen) Product Service Limited, this test report shall not be copied except in full and published as advertisement.

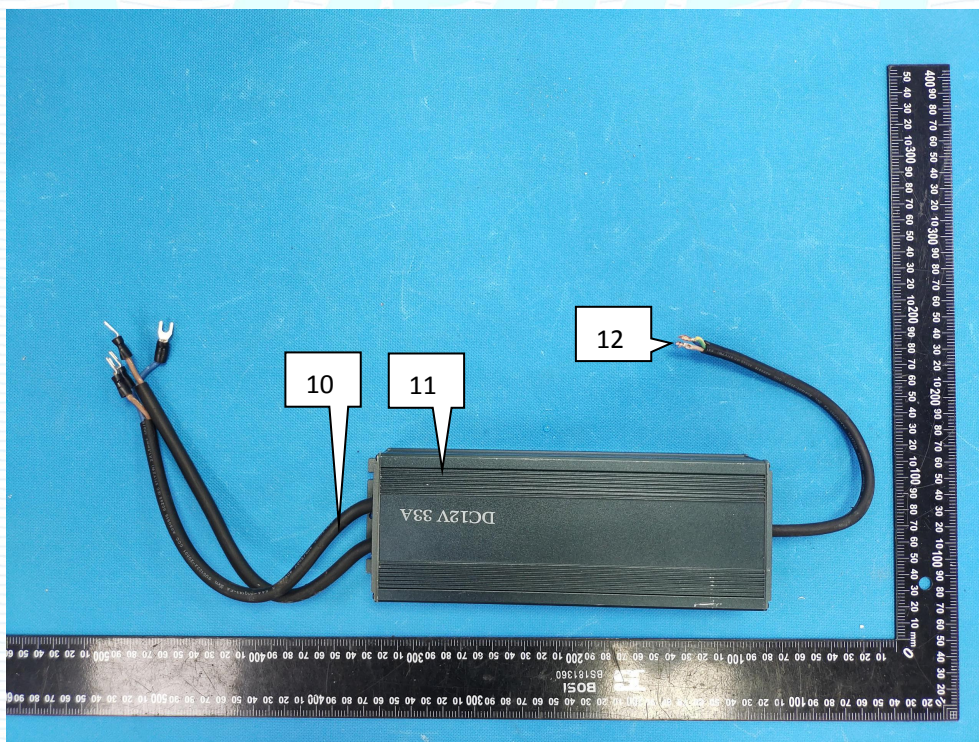
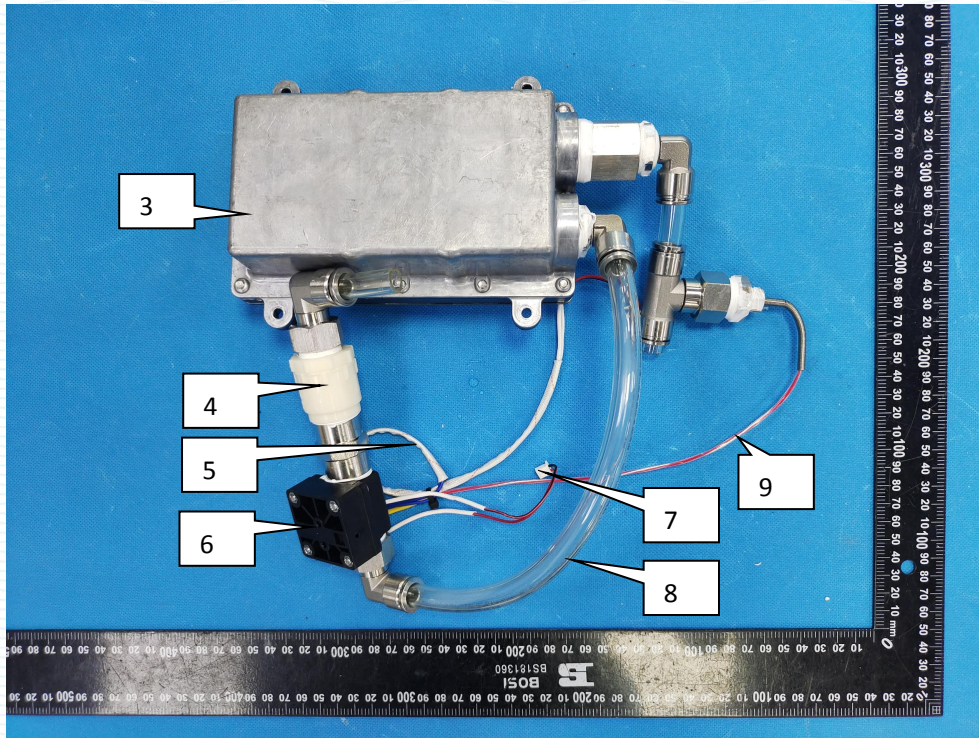
Beide (Shenzhen) Product Service Limited
Building5.No.5.Lane 208.Rongle East Road,Songjiang-District,Shanghai
Tel.: +86-755-27454498, Email: admin@szbeide.com

RoHS TEST REPORT

Report No. : B-R2410C4444

Date: 2024-11-05

Page 25 of 28



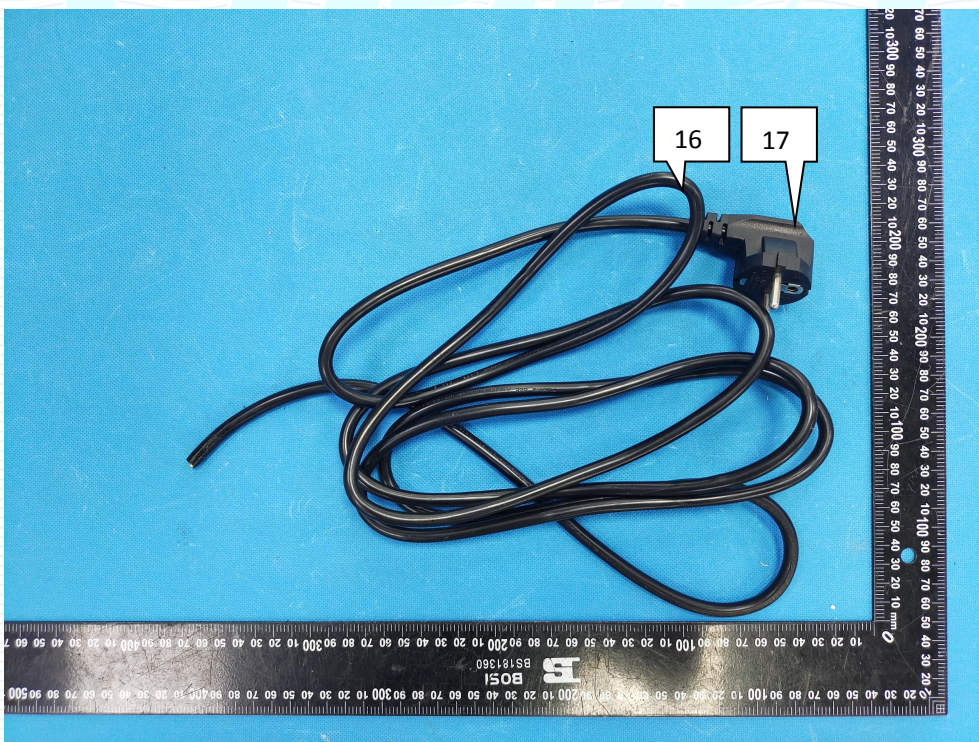
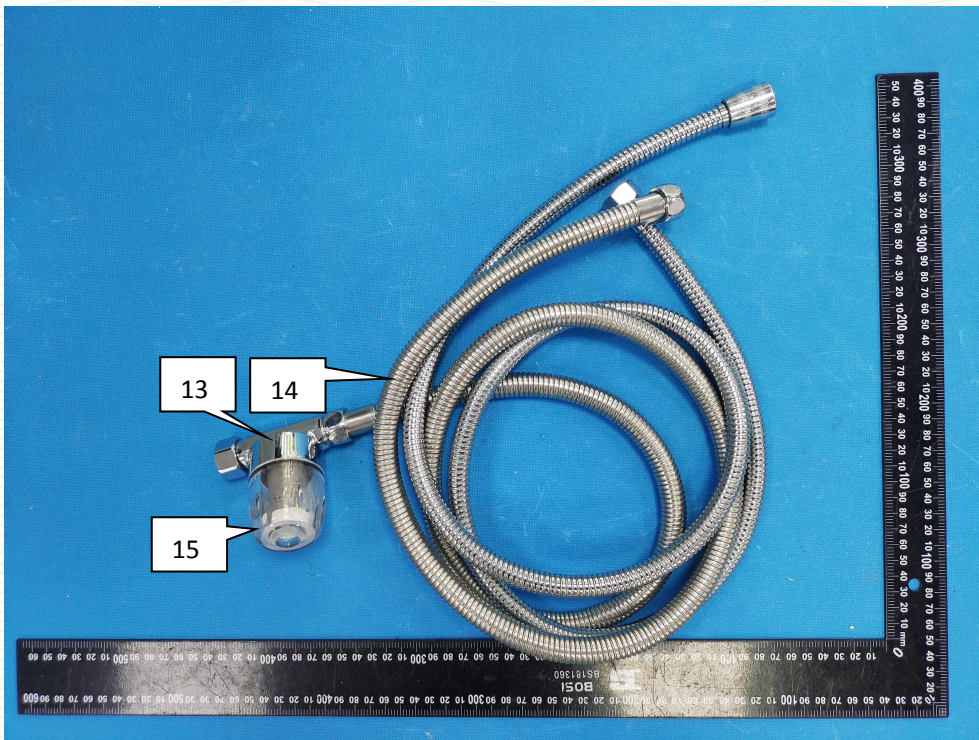
This report is considered invalidated without the Special Seal for Inspection of the Beide (Shenzhen) Product Service Limited, This report shall not be altered, increased or deleted. The results shown in this test report refer only to the sample(s) tested. Without written approval of Beide (Shenzhen) Product Service Limited, this test report shall not be copied except in full and published as advertisement.

RoHS TEST REPORT

Report No. : B-R2410C4444

Date: 2024-11-05

Page 26 of 28



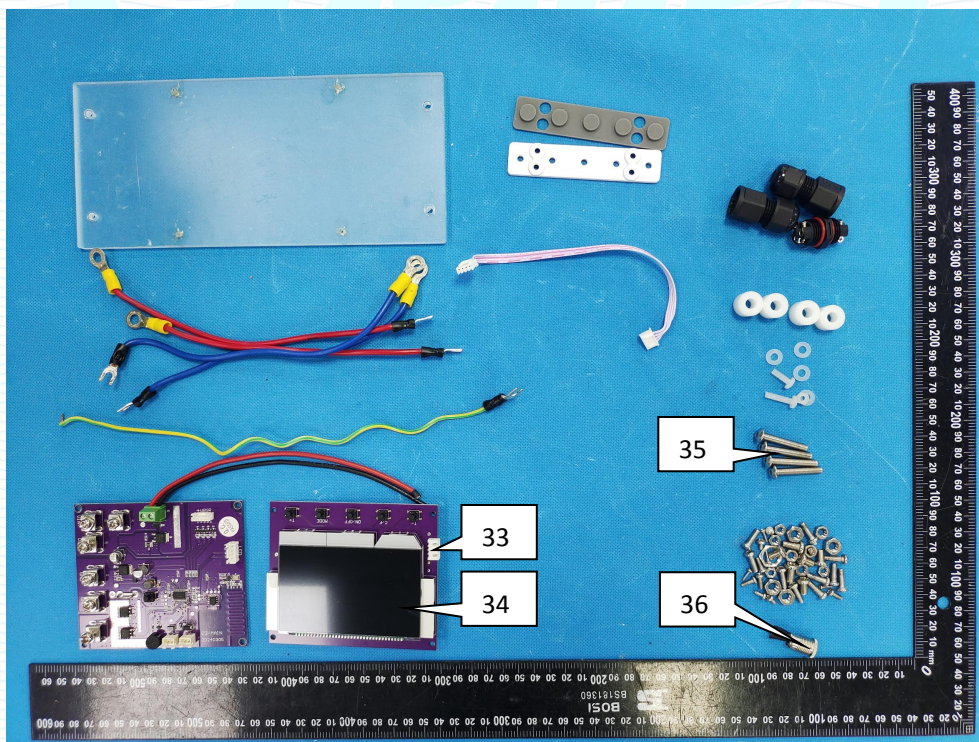
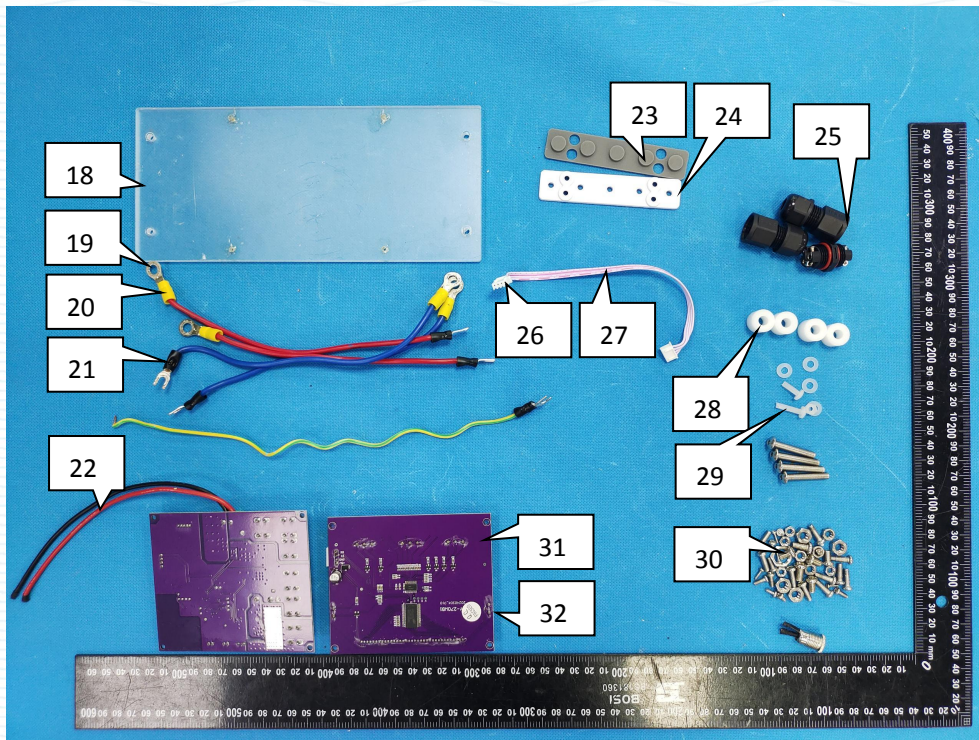
This report is considered invalidated without the Special Seal for Inspection of the Beide (Shenzhen) Product Service Limited, This report shall not be altered, increased or deleted. The results shown in this test report refer only to the sample(s) tested. Without written approval of Beide (Shenzhen) Product Service Limited, this test report shall not be copied except in full and published as advertisement.

RoHS TEST REPORT

Report No. : B-R2410C4444

Date: 2024-11-05

Page 27 of 28



This report is considered invalidated without the Special Seal for Inspection of the Beide (Shenzhen) Product Service Limited, This report shall not be altered, increased or deleted. The results shown in this test report refer only to the sample(s) tested. Without written approval of Beide (Shenzhen) Product Service Limited, this test report shall not be copied except in full and published as advertisement.

RoHS TEST REPORT

Report No. : B-R2410C4444

Date: 2024-11-05

Page 28 of 28



End of Report

This report is considered invalidated without the Special Seal for Inspection of the Beide (Shenzhen) Product Service Limited, This report shall not be altered, increased or deleted. The results shown in this test report refer only to the sample(s) tested. Without written approval of Beide (Shenzhen) Product Service Limited, this test report shall not be copied except in full and published as advertisement.

Beide (Shenzhen) Product Service Limited
Building5.No.5.Lane 208.Rongle East Road,Songjiang-District,Shanghai
Tel.: +86-755-27454498, Email: admin@szbeide.com